

## Key Thrusts of SkillsFuture

SkillsFuture is supported by four key thrusts:



Help individuals to make well-informed choices in education, training and careers



Foster a culture that supports and celebrates lifelong learning



Promote employer recognition & career development based on skills and mastery



Develop an integrated, high-quality system of education and training that responds to constantly evolving industry needs

## How Can I Benefit?

Eligible ITE graduates of the programme can benefit from the following:

A sign-on incentive of \$5,000 (For Singapore Citizens only)



Competitive starting salaries



Skills deepening through Productivity Improvement Project and Facilitated/E-learning



Industry-recognised certification



Wage increments<sup>3</sup> and meaningful career advancement pathways upon successful programme completion and satisfactory job performance

Note: <sup>3</sup>Participants can potentially receive a wage increase upon completion of programme if they perform well and take on enlarged job scopes

### For more information:

Contact Nanyang Polytechnic (NYP)

School of Engineering (SEG)

Mr Desmond Tan, email: [desmond\\_tan@nyp.edu.sg](mailto:desmond_tan@nyp.edu.sg)

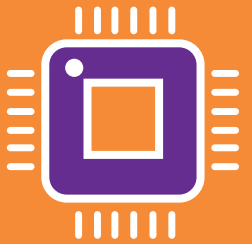
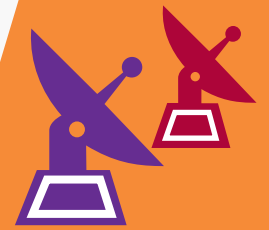
Mr Mike Kwek, [mike\\_kwek@nyp.edu.sg](mailto:mike_kwek@nyp.edu.sg)



## SKILLSFUTURE EARN AND LEARN PROGRAMME

### PRECISION ENGINEERING

A real career advantage is within easy reach for fresh **ITE graduates.**



A SkillsFuture Initiative  
For more information, please visit  
[www.skillsfuture.sg](http://www.skillsfuture.sg)

## Sector Overview

Precision engineering is an important pillar of Singapore's manufacturing industry. It serves as a crucial enabler of many key manufacturing sectors such as aerospace, oil and gas, marine and offshore, electronics and medical technology. It is the skill that enables us to design and build complex components for sophisticated machinery; from the tiniest semiconductor chips to mechanical hearts; to sturdy drill bits for deep sea exploration to complicated aircraft engines.

In 2013, the precision engineering industry provided employment for close to 90,000 workers and achieved a total output of \$33 billion, accounting for 11.4% of Singapore's total manufacturing output. Total value-add (VA) for the year was \$7.5 billion<sup>1</sup>.

Precision Engineering output  
**\$33**  
billion  
2013

Provided Employment  
**90,000**  
workers  
2013

## Plan Ahead

### Job Positions Available

The precision engineering industry offers exciting career and development opportunities. Under SkillsFuture Earn and Learn Programme, ITE graduates can look forward to accelerated career progression in job roles such as Machinist<sup>2</sup>.



Note: <sup>1</sup>Ministry of Trade and Industry – Economic Survey of Singapore, 2013  
Note: <sup>2</sup>Job titles may vary from companies

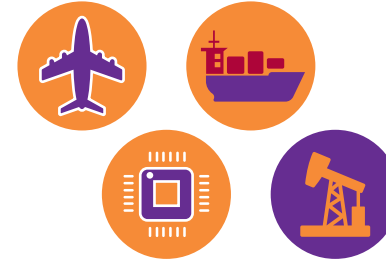


### Salary

Successful participants will receive a starting salary ranging from \$1,500 to \$1,700 per month. Upon completion of the programme, they will receive possible commensurate wage which will range from \$1,600 to \$1,800.

### Career Progression

Participants will join established Precision Engineering companies as a Machinist and progress through the programme to become a Machining Specialist<sup>2</sup>.



### Participating Organisations

Precision Engineering companies participating in the programme include A & One Precision Engineering Pte Ltd, ASM Pacific Technology Pte Ltd, JEP Precision Engineering Pte Ltd, Makino Asia Pte Ltd, Onn Wah Precision Machining Pte Ltd, and VDL Enabling Technologies Group Singapore.

### Programme Duration

Participants under the programme will undergo 18-month structured training programme.



## Programme Structure & Certification(s)

Diploma in Precision Engineering (Master Craftsman Skills) awarded by Singapore Workforce Development Agency



Structured training programme (over 18 months)

Refresher Course (2 months)

On-the-job training, project and facilitated classroom learning (16 months)

Participants will undergo a 18-month structured training programme that includes a 2-month refresher course coupled with on-the-job training, project and facilitated classroom learning. This will lead to a **Singapore Workforce Skills Qualifications (WSQ) Diploma in Precision Engineering (Master Craftsman Skills)**. The programme is managed by School of Engineering, Nanyang Polytechnic.



### Eligibility Criteria

Graduates from the following courses are eligible for the programme:

NITEC Courses	Higher NITEC Courses
Aerospace Machining Technology	Aerospace Engineering
Aerospace Technology	Engineering with Business
Automotive Technology	Mechanical Engineering
Laser & Tooling Technology	Mechatronics Engineering
Machine Technology (2-Year & 3-Year)	
Mechatronics	
Medical Manufacturing Technology	