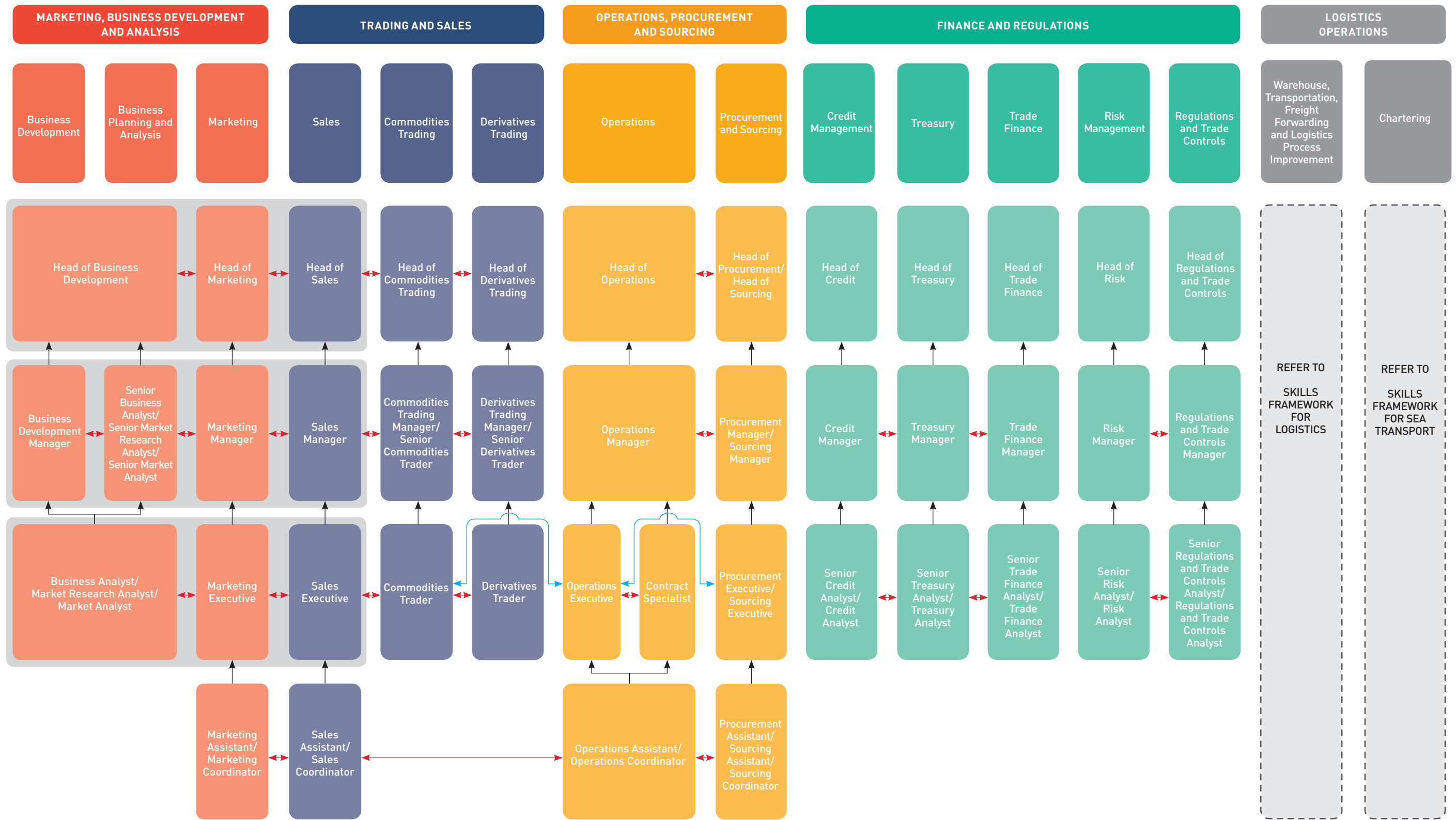


SKILLS FRAMEWORK FOR WHOLESALE TRADE

Career Pathways



Legend:

- ↑ Vertical movements between job roles
- ↔ Lateral movements between job roles
- ↔ 1-1 lateral movement between job roles
- █ Cross-functional movement between job roles within colour band

The Career Map serves as a reference to reflect the available job roles and possible career pathways in the Wholesale Trade sector, which may vary depending on each organisation's structure and business context. The career progression pathways would depend on individual performance, capability, experience, aspiration, as well as organisation needs.