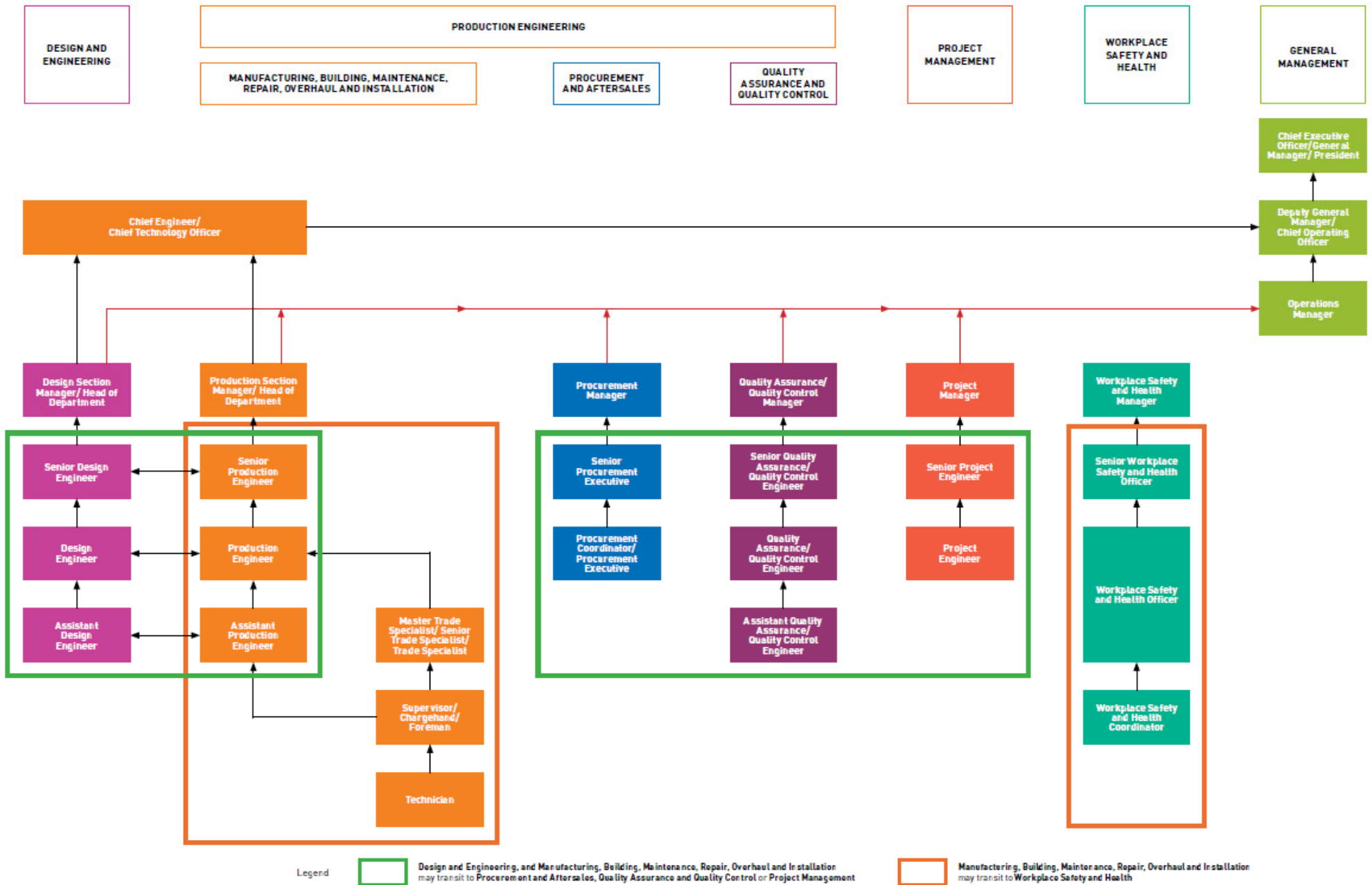


# SKILLS FRAMEWORK FOR MARINE AND OFFSHORE Career Pathways



The Career Map serves as a reference to reflect the available job roles and possible career pathways in the Marine and Offshore sector, which may vary depending on each company's structure and business context. The career progression pathways would depend on individual performance, capability, experience, aspiration, as well as company needs.