

**A) Mapping of Generic Skills and Competencies (GSC) to Critical Core Skills (CCS)**

#	GENERIC SKILLS AND COMPETENCIES (GSC)	CRITICAL CORE SKILLS (CCS)
1	Communication	Communication
2	Computational Thinking	<i>Removed</i>
3	Creative Thinking	Creative Thinking
4	Decision Making	Decision Making
5	Developing People	Developing People
6	Digital Literacy	Digital Fluency
7	Global Mindset	Global Perspective
8	Interpersonal Skills	Collaboration
9	Leadership	Removed (elements subsumed within Developing People)
10	Lifelong Learning	Learning Agility
11	Managing Diversity	Building Inclusivity
12	Problem Solving	Problem Solving
13	Resource Management	Removed (elements subsumed within Self Management)
14	Sense Making	Sense Making
15	Service Orientation	Customer Orientation
16	Teamwork	Collaboration
17	Transdisciplinary Thinking	Transdisciplinary Thinking
18	Virtual Collaboration	Collaboration

Apart from the CCS listed above which existing GSCs are mapped to, there are three new CCS forming the suite of 16. They are:

- 1) Adaptability;
- 2) Influence; and
- 3) Self Management

## **B) Advisory on Referencing the Critical Core Skills (CCS) alongside the Skills Framework (SFw)**

This section explains how users of the Skills Framework should refer to the GSC-to-CCS mapping document in order to establish what a specific GSC has become. The possible scenarios could be:

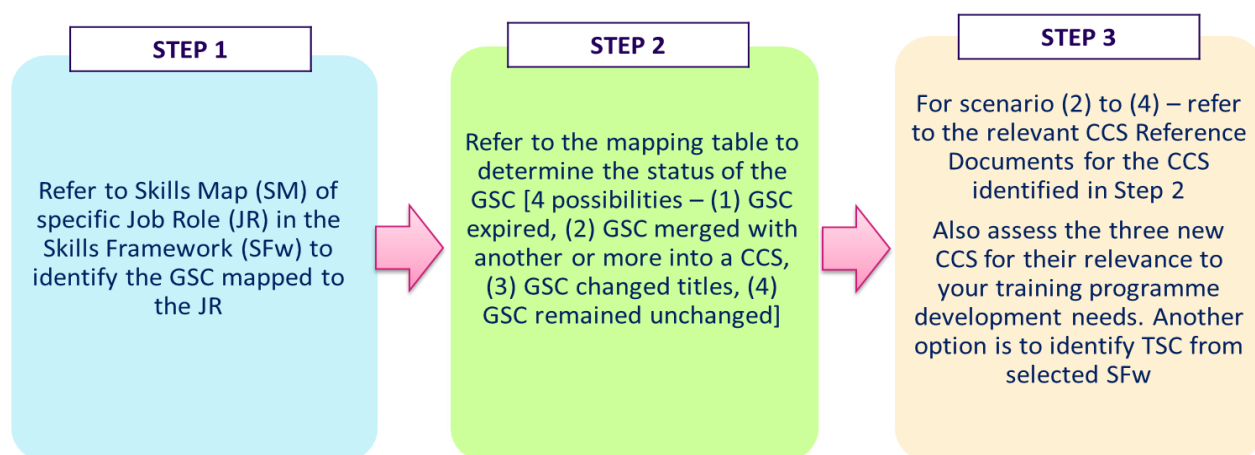
- i) GSC remained unchanged;
- ii) GSC title has changed; or
- iii) GSC has merged with one or more GSC to become a CCS; or
- iv) GSC has been removed in consultation with the industries

There are also three new CCS forming the suite of 16 CCS which previously were not defined as part of the GSC. They are:

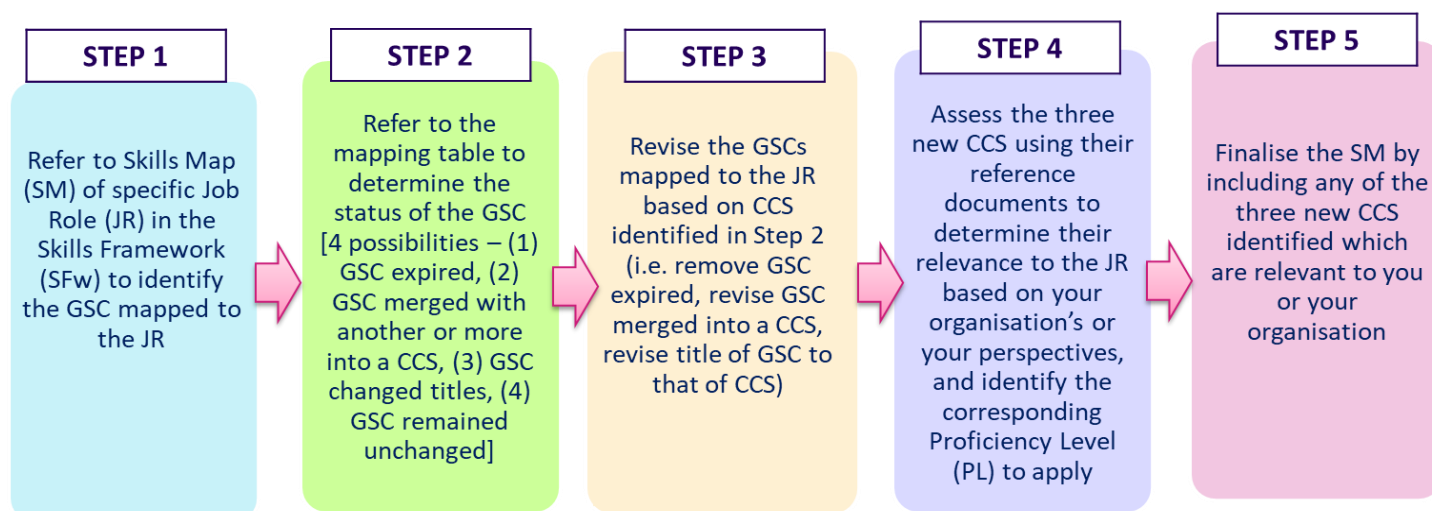
- 1) Adaptability;
- 2) Influence; and
- 3) Self Management

Users of the Skills Framework may wish to consider adopting these three CCS, if appropriate, to serve their needs (e.g. curriculum development, improving staff performance checklist etc). Please refer to the CCS Reference Documents for information on each CCS and their three proficiency levels.

### Advisory for Education and Training Providers (e.g. Curriculum Developer, Course Manager)



### Advisory for Employers (e.g. HR Practitioners) and Individuals



Re-mapping of Top 5 GSC to CCS in Skills Map (Illustration)

