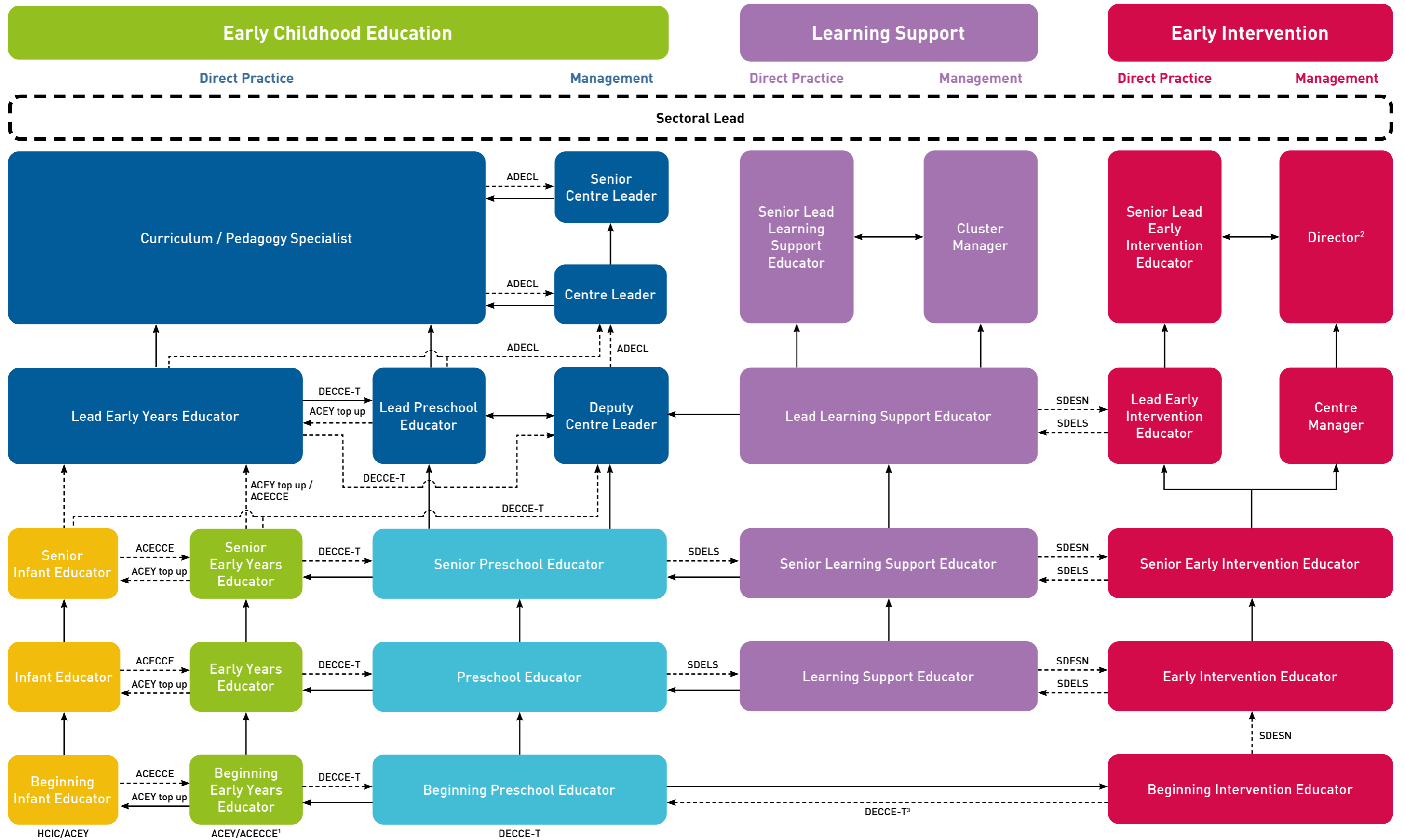


# SKILLS FRAMEWORK FOR EARLY CHILDHOOD Career Pathways



**LEGEND:**  
 → Attainment of competencies  
 - - - -> Attainment of professional qualifications

<sup>1</sup> ACEY is for 0 years old to 3 years old, and ACECCE is for 18 months old to 4 years old.  
<sup>2</sup> This role can typically be found in Social Service Agencies (SSAs) that run EI centres.  
<sup>3</sup> Generally, DECCE-T is a pre-requisite for EI roles to move laterally into the equivalent EC roles, e.g. EI Educator to Preschool Educator. This does not apply to the Senior Lead EI Educator and Director roles.